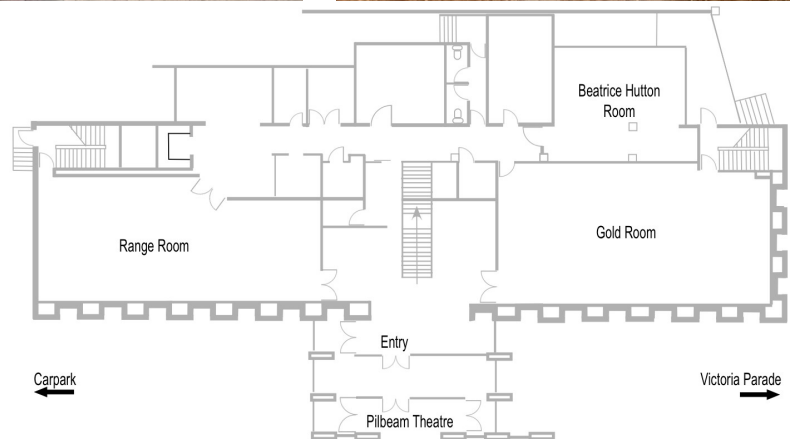


# 62 VICTORIA PARADE GOLD ROOM



Originally opened in 1979 as the Art Gallery, 62 Victoria Parade is a series of open span spaces with high ceilings spread over two levels. Ideal for conducting meetings, training, rehearsals or small performance spaces.



## LOCATION:

Next to the Pilbeam Theatre, 62 Victoria Parade is only a short walk from the CBD and minutes from the airport and the beautiful Fitzroy River precinct

## RATES:

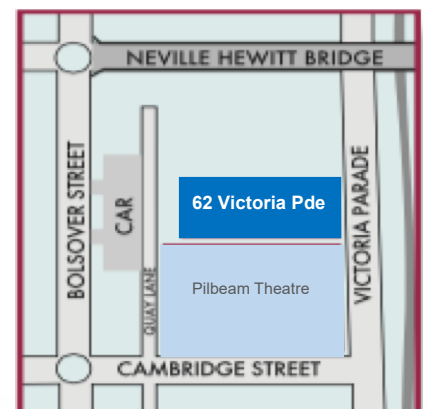
Rockhampton Regional Council adopted fees and charges apply

## AREA:

119 M<sup>2</sup>

## KEY FEATURES:

- The Gold Room is an open span room with parquetry floor
- Comes with 10 tables and 50 chairs
- Air Conditioned
- Wheelchair accessible
- Loading dock with easy access and parking for heavy vehicles
- On street and off street patron parking
- Licensed bar available on request
- Other equipment available for hire through our office



Current as at September 2022

PO Box 1860 Rockhampton QLD 4700 T.07-49245600

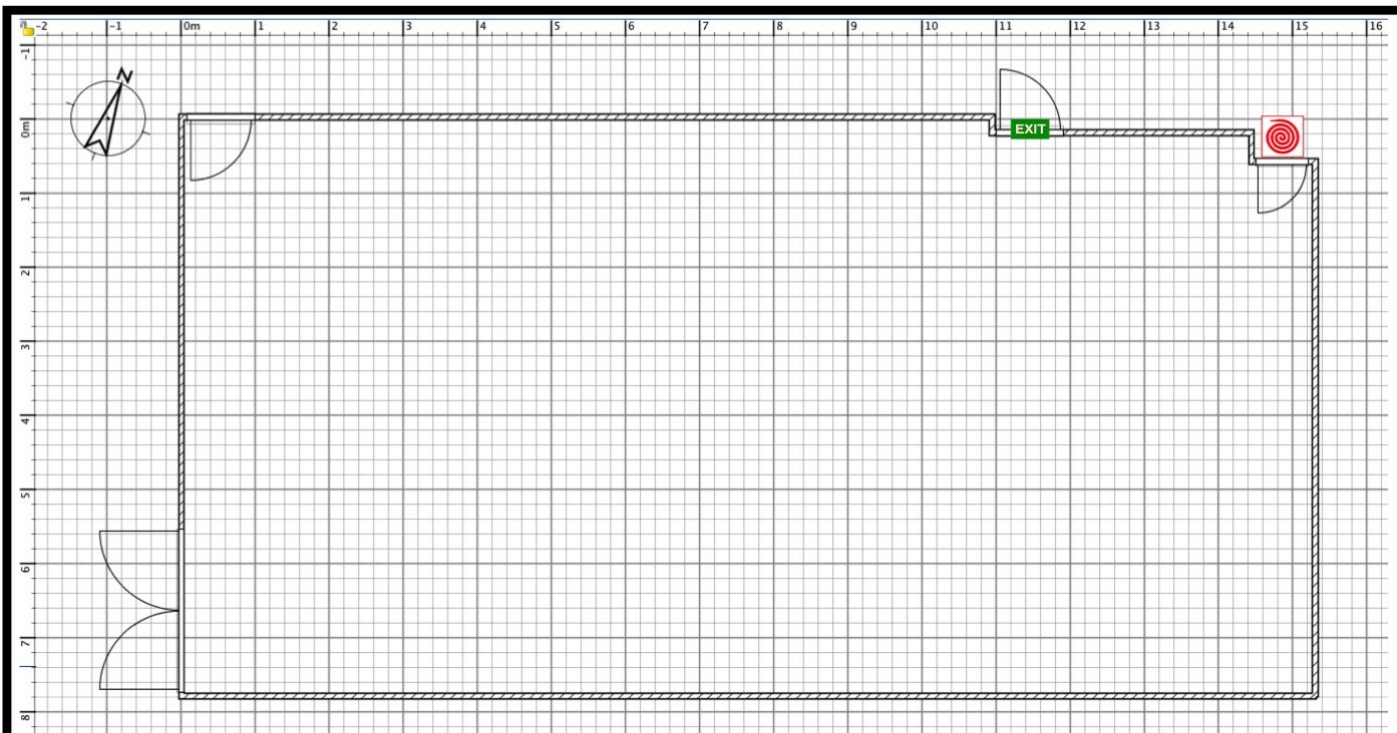
E. majorvenues@rrc.qld.gov.au

62 Victoria Parade is owned and operated by Rockhampton Regional Council

[www.seeitlive.com.au](http://www.seeitlive.com.au)

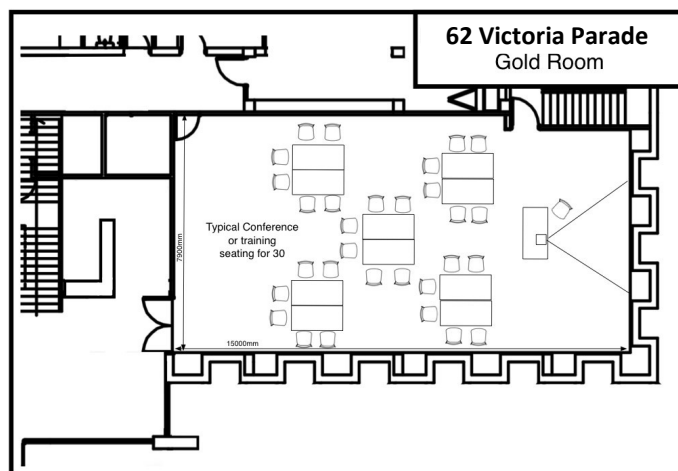
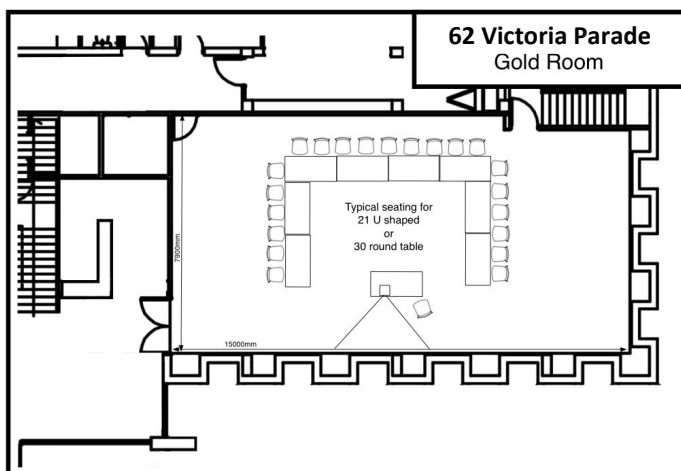


# 62 VICTORIA PARADE GOLD ROOM



## 62 Victoria Parade Gold Room

1 meter squares



PO Box 1860 Rockhampton QLD 4700 T.07-49245600  
E. majorvenues@rrc.qld.gov.au  
62 Victoria Parade is owned and operated by Rockhampton Regional Council

[www.seeitlive.com.au](http://www.seeitlive.com.au)

